



Your **AEI** Custom Heatmap

INFRATECH
COMFORT



Customer Name: Your Name Here
Prepared By: AEI Product Specialist



+

INFRATECH
COMFORT

For over 25 years, AEI has partnered with Infratech to distribute premium electric infrared heating systems to our valued customers. Infratech's commitment to quality, aesthetics, and state of the art control systems, has made them a perfect choice for any outdoor heating application. AEI takes pride in providing expert advice for all things Infratech, making your outdoor heating dreams a reality.

Infratech has been a pioneer and leader in Infrared technology for more than 50 years. They use the latest in manufacturing technologies to offer you the most efficient infrared heating system backed by an industry-leading warranty.

We are proud that every Infratech product is MADE in the U.S.A., designed and manufactured in their 100,000 sq. ft. state-of-the-art facility in Gardena, California. This ensures that Infratech offers high quality, innovative products that exceed customers' expectations.

Enclosed you will find your custom outdoor heating plan, provided by our team of experts. Please let us know if you have any additional questions, and I sincerely hope you enjoy the Infratech experience.

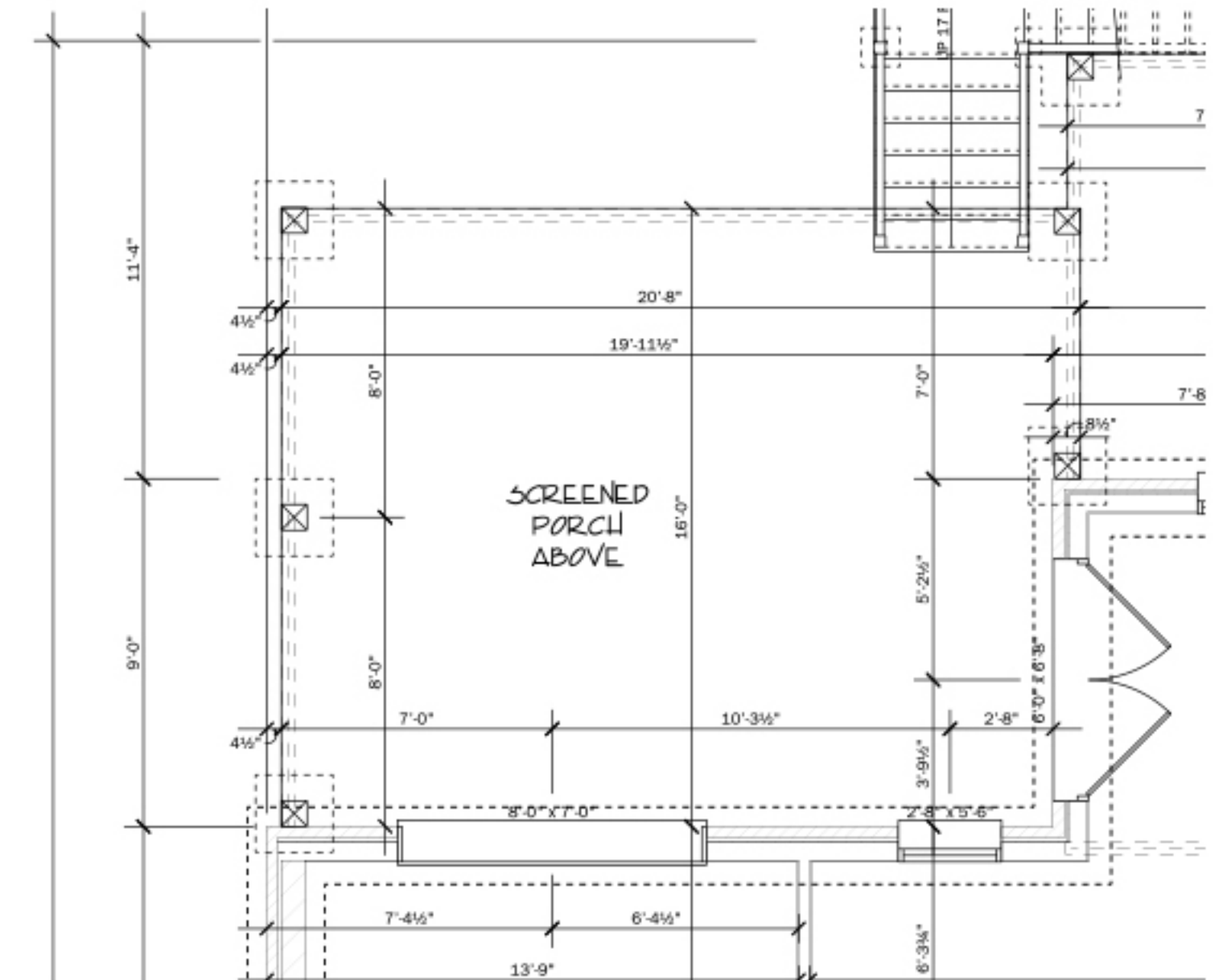
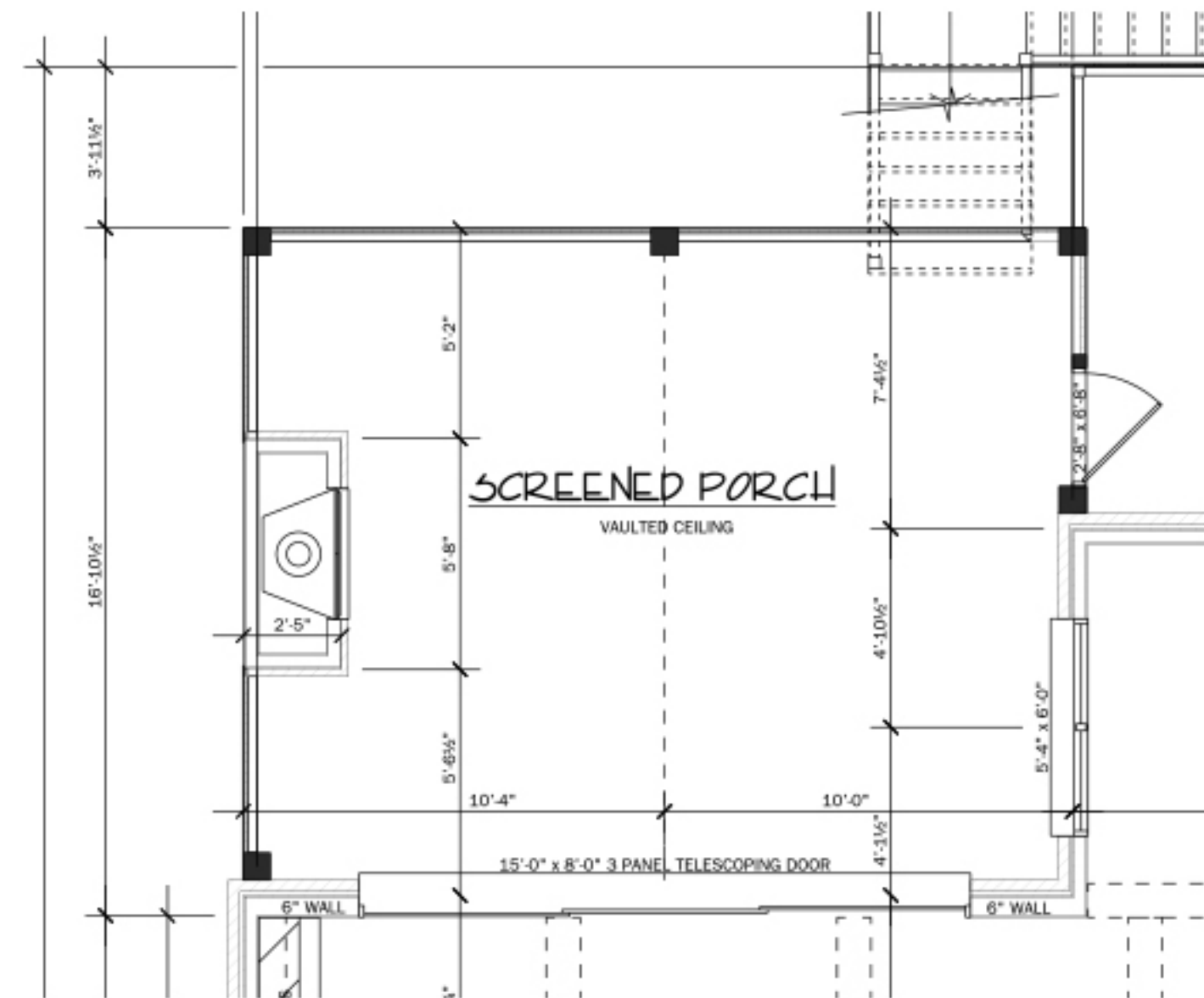


Your Project In Focus

Enclosed, you will find the comprehensive details you shared for your current project. These insights have been instrumental in guiding our team as they meticulously plan your outdoor space.



- Covered Patio
- Vaulted Ceilings
- Mounting Height - 8'-12'
- Patio Length- Upper Deck 20' 8"
Lower Deck 20' 8"
- Patio Width - Upper Deck 16'
Lower Deck 16'



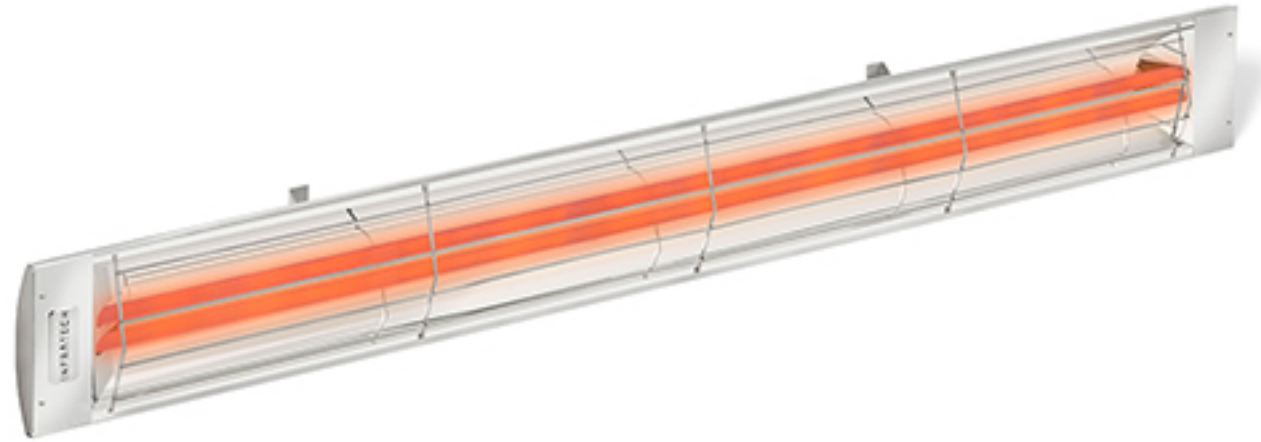
Personalized For Your Outdoor Space



Heaters

We are pleased to offer the following comfort heat options.

(4) CD6024SS (Available in Black)



Mounting Option - Drop Pole

We are pleased to offer the following comfort heat options.

(4) 13-1246



Controls - Option 1

We are pleased to offer the following comfort heat options.

(2) 14-4305 (Duplex Stack Switch)



Controls - Option 2

We are pleased to offer the following comfort heat options.

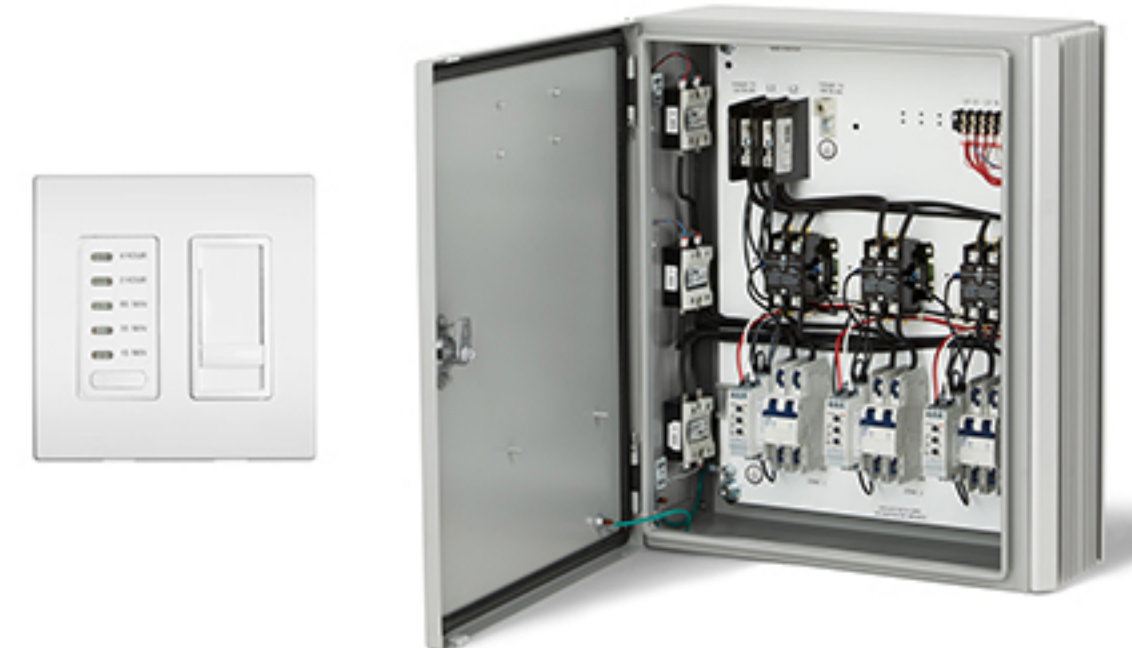
(2) 14-4710-30B (Dual Contactor 30A)



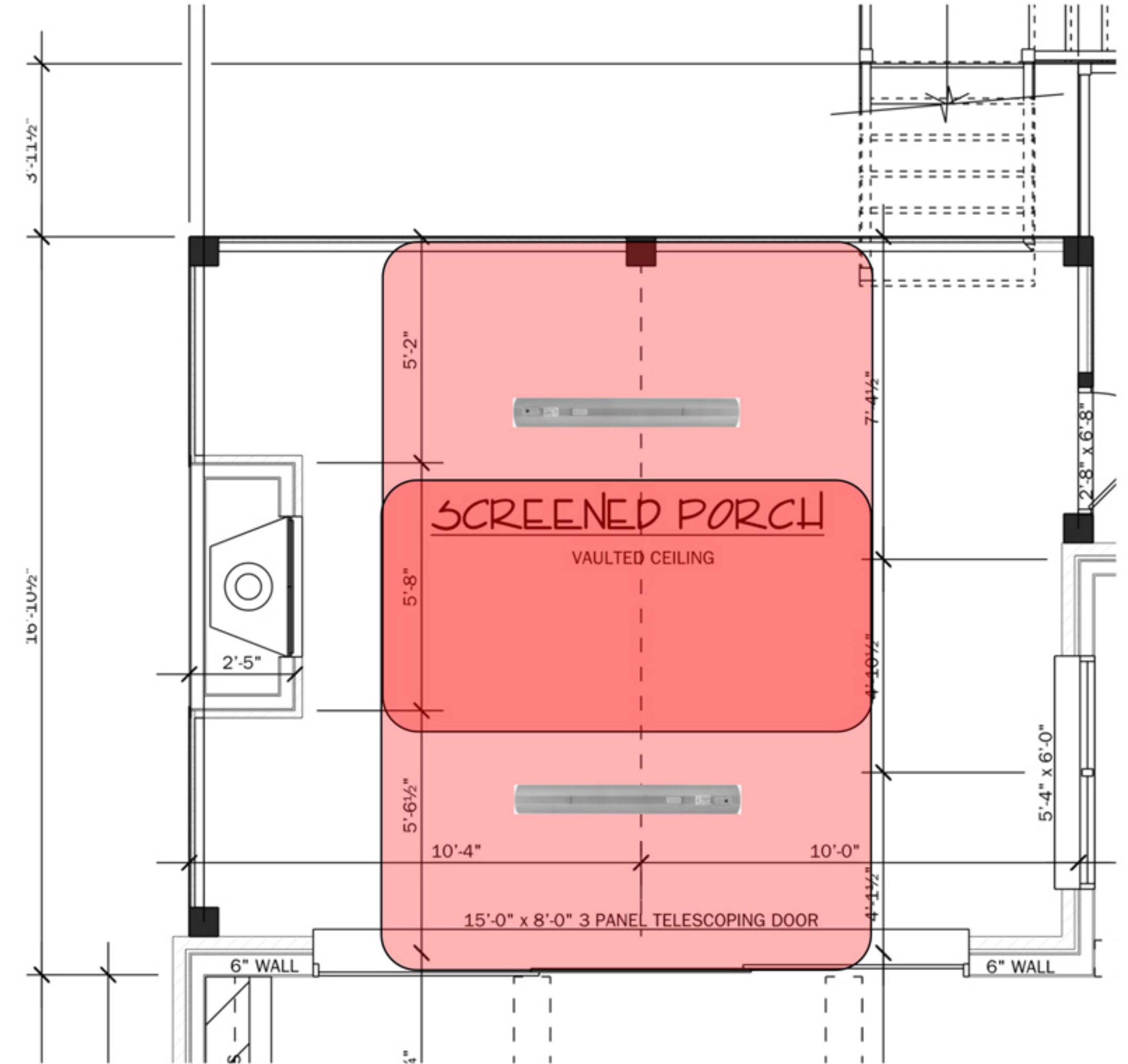
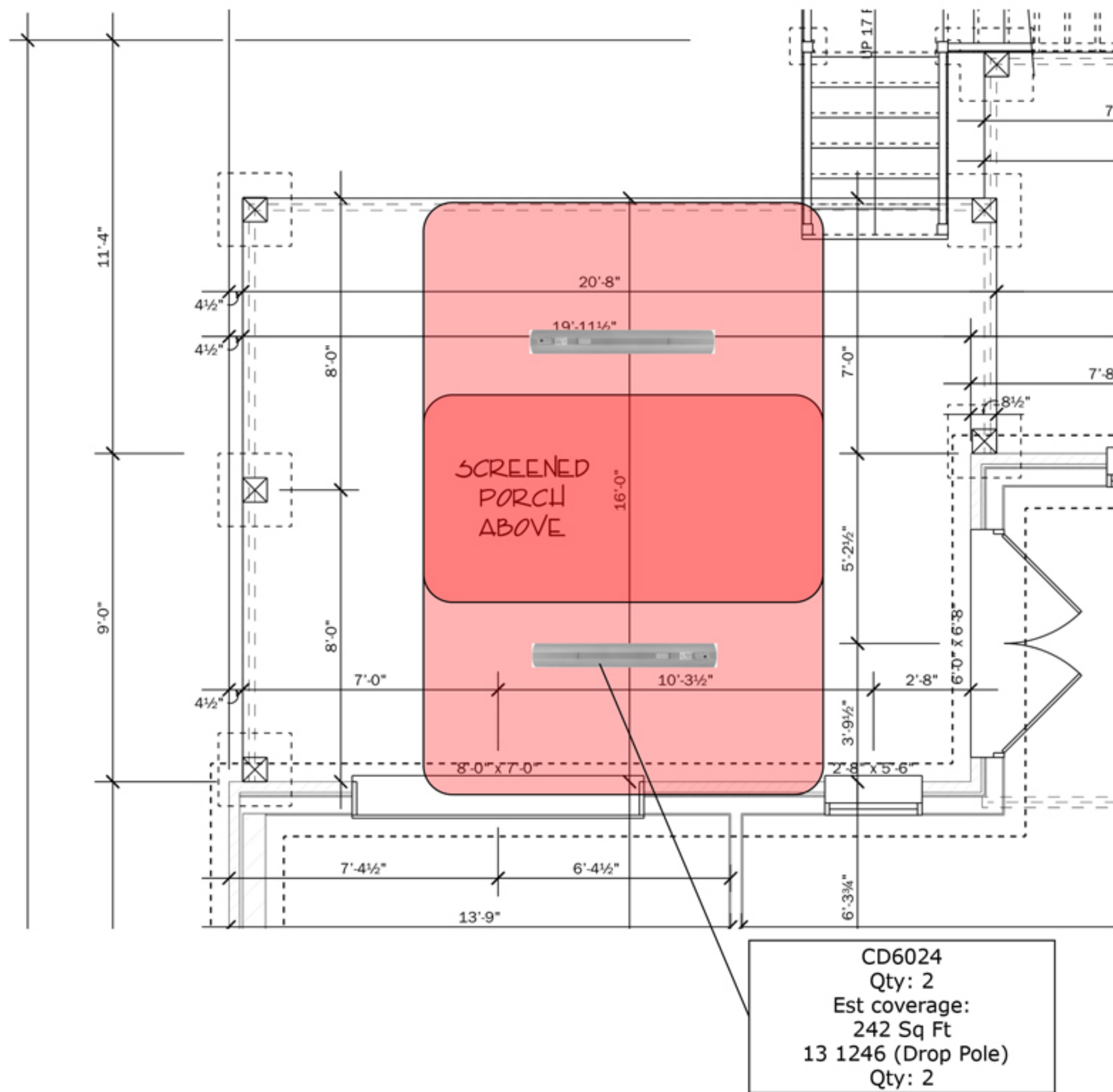
Controls - Option 3

We are pleased to offer the following comfort heat options.

(2) 30-4072 (Universal Panel)



Personalized For Your Outdoor Space

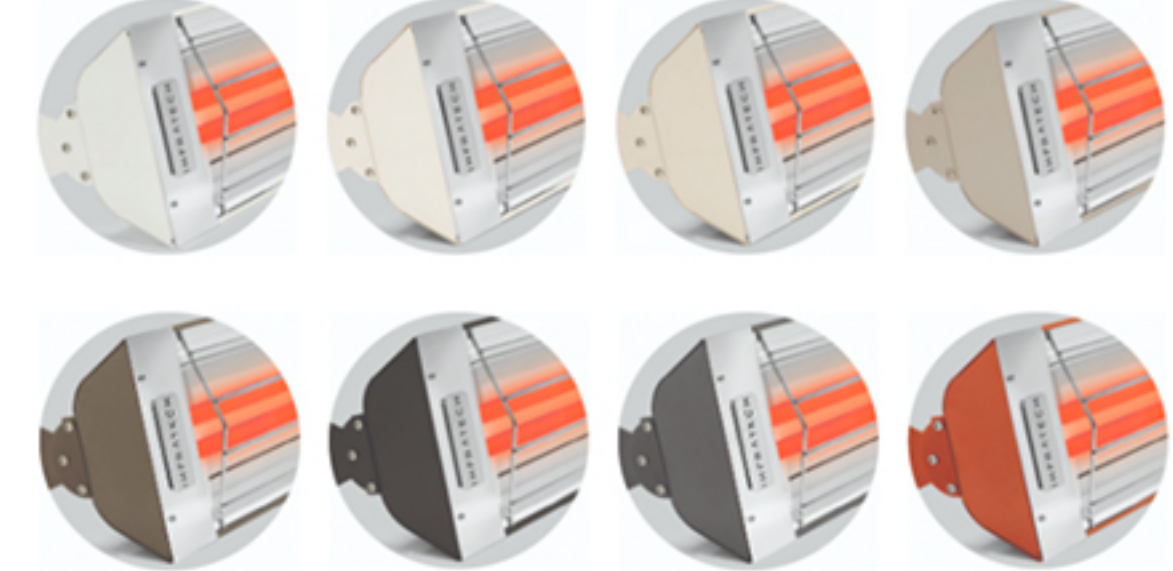


Disclaimer: This personalized layout depicts approximate heater coverage area based on manufacturer-recommended specifications. Actual heater coverage can vary depending on a number of factors, including outside temperature, wind chill, exposure to the elements, angle of the heater, and heater mounting height. **Final mounting locations to be determined by the installer.**



Universal Control Package

The Universal Control is a complete solution that will work with almost any 120v lighting control. Remotely control your heating system from a smartphone or tablet via Wi-Fi or Bluetooth compatible device that can be purchased to gain this function. Using your Universal Control Package, you will be able to dim your heaters both up and down like the lights in your house using a dimmer.



Custom Colors Available

When it comes to designing your ideal heating system, we understand the value of choice. With eight standard colors and custom powder coating available, you can design a heating system that seamlessly conforms to the look and feel of your space. All colors are powder coated over 304 stainless steel and baked to achieve long lasting, fade and corrosion resistant finish results.

Infratech heaters are fixtures at some of the most sought after commercial and residential properties in the world.

Why? When it comes to design, installation, manufacturing and control functionality, Infratech offers a robust set of industry- exclusive features and benefits. From flush mount installation to voice-activated, hands-free remote controls, American craftsmanship and custom design capabilities, our process delivers a superior experience for the design-build professionals, property owners and guests who choose us.

INFRATECH

PREMIUM COMFORT HEAT PROUDLY MADE IN THE USA



1. Made in the USA

2. Flush Mount Installation

3. Smart Home Integration

4. Custom Controls

5. Custom Design

Our Company & Our Mission

Founded in 1966, AEI has operated under a consistent premise: provide the finest in innovative outdoor cooking and patio heating products to discriminating consumers and commercial customers. We were there in the spring of 1958 when the gas grill was invented; we were there in 1968 when the first production patio heaters were fabricated and have been innovators in both of these industries ever since.

Our mission has always been simple: supply the perfect cooking and heating equipment to enhance any patio then back it up with industry-leading warranties and support.



Defining The Outdoor Grilling & Comfort Heat Experience Since 1966

2641 DuBridge Ave. Irvine, CA 92606 | 949-474-3070

aeicorporation.com info@aeicorporation.com

